

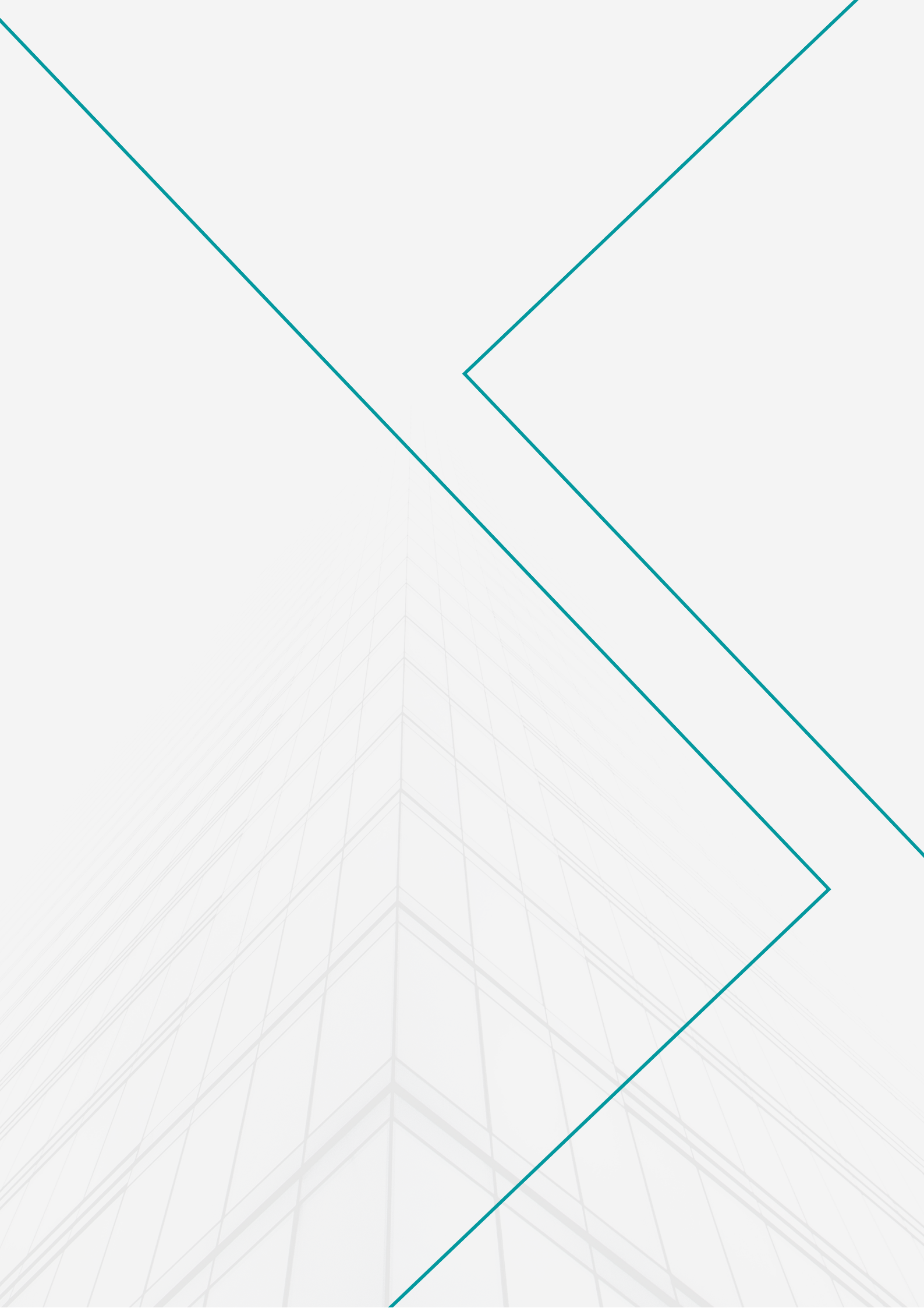
NILGIRI COLLEGE OF ARTS AND SCIENCE



QUALITY INDICATOR FRAMEWORK (QIF)

Criterion 4

Infrastructure & Learning Resources



INFRASTRUCTURE AND PHYSICAL FACILITIES

The institution provides elegantly designed and developed infrastructure with unique facilities and amenities spreading happiness among learners.

1. Infrastructure and Physical facilities

- Campus
- Two Blocks
- Hostel
- Auditorium



INFRASTRUCTURE AND PHYSICAL FACILITIES

2. Learning Resources (Classrooms, Laboratories, ICT facilities)

1. ICT Classrooms
2. Smart Board
3. Seminar Halls
4. Robots
5. Innovation Lab
6. 3D Printer
7. Computer Lab (CS, CA, MM, PG)
8. Physics Lab
9. Library with Robots
10. E-Gate at Library
11. Department Room
12. HoD Cabin
13. MD, Principal, IQAC, Academic Dean, R&D Office, Finance Office, Campus Manager Office, Admission Office, University Section Office, Counselling centre, Read and Reflect Corner, Alia Campus Radio



INFRASTRUCTURE AND PHYSICAL FACILITIES

3. Support Facilities (Cultural Activities, Gymnasium, Yoga etc)

1. Valluvar Arangam
2. Cordova
3. Board Room
4. Exam Cell
5. PET Office
6. 5s Turf
7. Cricket Net
8. Indoor Games
9. Gymnasium
10. Yoga and Meditation Hall
11. Healing Garden
12. Happiness Garden
13. Herbal Garden
14. Debate Corner
15. Listening Square
16. Multi Faith Centre
17. Auto Bell System
18. Transformer
19. Natural Pond
20. Paddy Fields



INFRASTRUCTURE AND PHYSICAL FACILITIES

4. Amenities

1. Hospital
2. Security Cabin
3. Power house
4. Solar
5. Kitchen
6. nCafe
7. Happy mart
8. Buses
9. Hostel (Boys and Girls)
10. Guest House
11. Cycles
12. Rain Water Harvesting
13. Girls Rooms
14. Nursing Room



Expenditure, excluding salary for infrastructure augmentation during 2017-18 to 2021-22

| Sl. No. | Year | Expenditure (in Lakhs) |
|--------------|---------|------------------------|
| 1 | 2017-18 | 224.19 |
| 2 | 2018-19 | 121.62 |
| 3 | 2019-20 | 405.35 |
| 4 | 2020-21 | 173.27 |
| 5 | 2021-22 | 602.57 |
| Total | | 1527.00 |

LIBRARY AS A LEARNING RESOURCE



The Dr. APJ Abdul Kalam library is the central library of the college and a learning resource centre. The library is fully automated with all its functions and has well-connected broadband and Wi-Fi. The Carpet area of the library is 3800 Square feet and has adequate reading space for 70 students at a time. The total number of books in the library is 10100.



LIBRARY AS A LEARNING RESOURCE

INTEGRATED LIBRARY MANAGEMENT SYSTEM (ILMS)

The library has Open-Source Library Automation Software KOHA (Version 21.11.05.000). The Online Public Access Catalogue (OPAC) facility enables users to search online and locate books and other materials available in the library. It facilitates users to reserve, renew, and recommend books in online mode. Online supervision is possible which reduces the line management responsibilities of librarians. The circulation management system of KOHA is based on standard-compliant Technologies – XHTML, CSS which makes KOHA a platform with an independent solution.

The library is automated with barcoding technology, and book issues are recorded using scanners. The issue and return process is carried out at the circulation desk using the barcoded identity card. A separate Touch screen system is provided to the library users for searching the books on Online Public Access Catalogue (OPAC).

In-house/remote access to the electronic database is provided to users creating a login ID and password. Registered users can access e-journals, e-books, and other electronic resources using N-List. Institutional resources like study materials, references, previous years' question papers, students' project/dissertation are made available to the users through D-Space integrated with KOHA. The library is equipped with plug-in facility for laptop.



LIBRARY AS A LEARNING RESOURCE

AUTOMATION

- Open-Source Library Automation Software KOHA (Version 21.11.05.000)
- Online Public Access Catalogue (OPAC) facility
- MARC (z39.50)
- standard-compliant World Wide Web Technologies – XHTML, CSS
- Barcoded Books
- Book Issue using Scanning
- Gate entry E-gate register (Embase Pro Suite software)
- INFLIBNET N-LIST

SERVICES

- Circulation section
- Reference section
- Digital Section
- Periodical Section
- Career Corner
- APJ Kalam Corner & Reading Area
- Digital Library
- PG Reference Corner
- Book Talk & Book Review
- Reading and Writing Competitions
- Library Internship
- Open Discussions & Debates
- Special Days Observation

FACILITIES

- Book Lending
- Reference
- Referral Service
- Career Guidance
- Online Document Delivery
- OPAC
- Current Affairs Segment
- Orientation Programs for New Users
- Library Literacy Program
- Reprographic Facility
- Remote Access to the Digital Contents
- CCTV Surveillance



LIBRARY AS A LEARNING RESOURCE

SUBSCRIPTION TO E-RESOURCES

An e-content digital library is provided in the library with internet connectivity of 07 computers and a printer. The library has an active membership of INFLIBNET N-LIST consortia and provides more than 6000 E-journals and 1.9 lakh E-Books on various subjects. Students are provided with facilities of NDL (National Digital Library) through which they can access books and journals in a digitalized format.

LIBRARY EXPENDITURE ON PURCHASE OF BOOKS AND JOURNALS

| Academic Year | Expenditure on Purchase of Books |
|---------------|----------------------------------|
| 2017-18 | 88036.00 |
| 2018-19 | 124315.00 |
| 2019-20 | 496864.00 |
| 2020-21 | 199231.00 |
| 2021-22 | 400079.00 |



LIBRARY AS A LEARNING RESOURCE

PER DAY USAGE OF LIBRARY

The Embase Pro Suite software is used to record the e-gate register. Students and faculties are provided with a barcoded identity card for registering In/Out and lending documents. It also provides user login IDs and passwords to the students and staff for remote access and per day library usage is 180 students.

| NAME | COUNT |
|------------------|---------|
| BOOKS | 10100 |
| GIFT BOOK | 351 |
| NON- BOOK | 148 |
| MAGAZINES | 39 |
| NEWSPAPERS | 18 |
| SUBJECT JOURNALS | 15 |
| E-BOOKS | 199500+ |
| E-JOURNALS | 6000+ |
| CD/DVD | 130 |

The other services such as in-house/remote access to e-publications facilitated by INFLIBNET, new arrival book display, full-time internet facility through Wi-Fi and LAN, career guidance books, reprographic service at nominal rates, and CCTV surveillance to ensure security.



The library takes the initiative of the Readers club which conducts various events on reading, competitions, and orientations to encourage the students to inhibit reading practices. Readers club publishes 'Ncas Live' monthly with campus updates. Best Reader awards are also given for students and faculties.

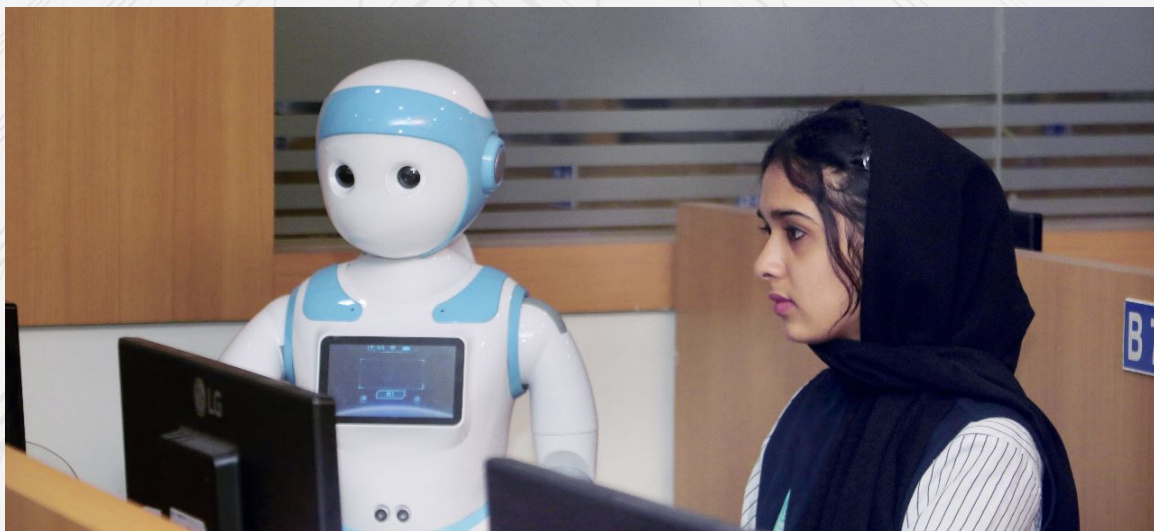
IT INFRASTRUCTURE

The institution is providing sophisticated IT infrastructure and has made a remarkable progression and upgrades it regularly. All the classrooms are well-equipped with smart TVs and a Wi-Fi facility with 400 Mbps speed that covers the campus premises. The improvement in the ICT facility has helped to transform teaching-learning from a traditional system to an innovative ICT- oriented approach.



AI and Robots:

Three Robots, Alice, and two i-Pals, assist the teaching-learning activities and serving the AI and robotic mission of the institute. Standing just about 5 feet tall, Alice Plus (Pro) provides an intuitive user interface that is applicable across campus. It is equipped with Greeting module, reception, office assistance, promotional support. The second robot is iPal, an android-supported human machine with 1.8 Ghz Quad core, 3 infrared sensors, and touch sensors. It is used for human interactive sessions, assisting the man works and giving opportunities for students to exploration.



IT INFRASTRUCTURE

LAN and Wi-Fi

- Broadband internet speed increased from 20 Mbps to 400 Mbps
- Wi-Fi and broadband connection
- Wi-Fi connectivity is ensured through access points from a centralized access controller
- 8 new routers were purchased, and currently the institution has 15 routers

Hardware and Software

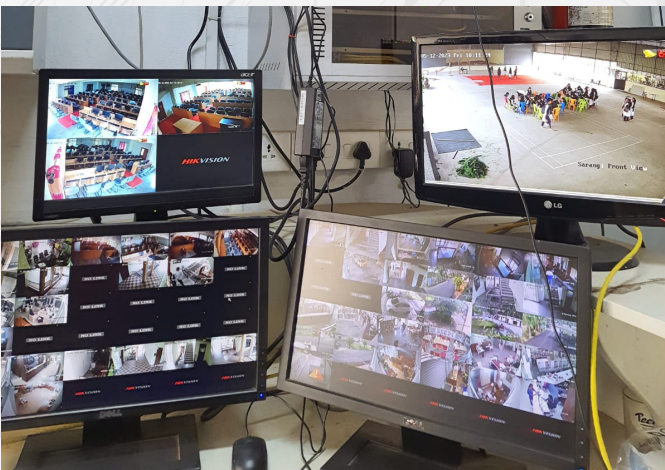
- 3 Interactive Intelligent panels were used for better teaching learning aspects.
- 75 percent of computers were upgraded from Core i3 to Core i7 processors.
- Licensed and Open Licensed software for the different academic requirements.
- Software like MBASE, Campus canvas, Testmoz, Zoom, CAMU, Tally, Express Pro, AWS
- Platform, KOHA
- Operating system Core i3 and i5.



IT INFRASTRUCTURE

IT Facilities Updation

- 3 digital computer labs and 1 language lab
- 265 computers for students
- 3 photocopier machines
- High-speed multi-option printer
- 88 CCTV cameras
- Windows 10, Linux, Ubuntu, SAP, MATLAB, R Tools.



IT INFRASTRUCTURE

Tele communication

The Institution has well connected Landline availability in all departments and along with Security rooms for the campus in which enables PRI Line with Direct Inner Dialling Facility.



Power Supply

- UPS capacity has been upgraded to 30 KVA
- The capacity of the power generator increased from 25kv to 82.5kv.
- Internalized UPS.



IT INFRASTRUCTURE

STUDENT – COMPUTER RATIO

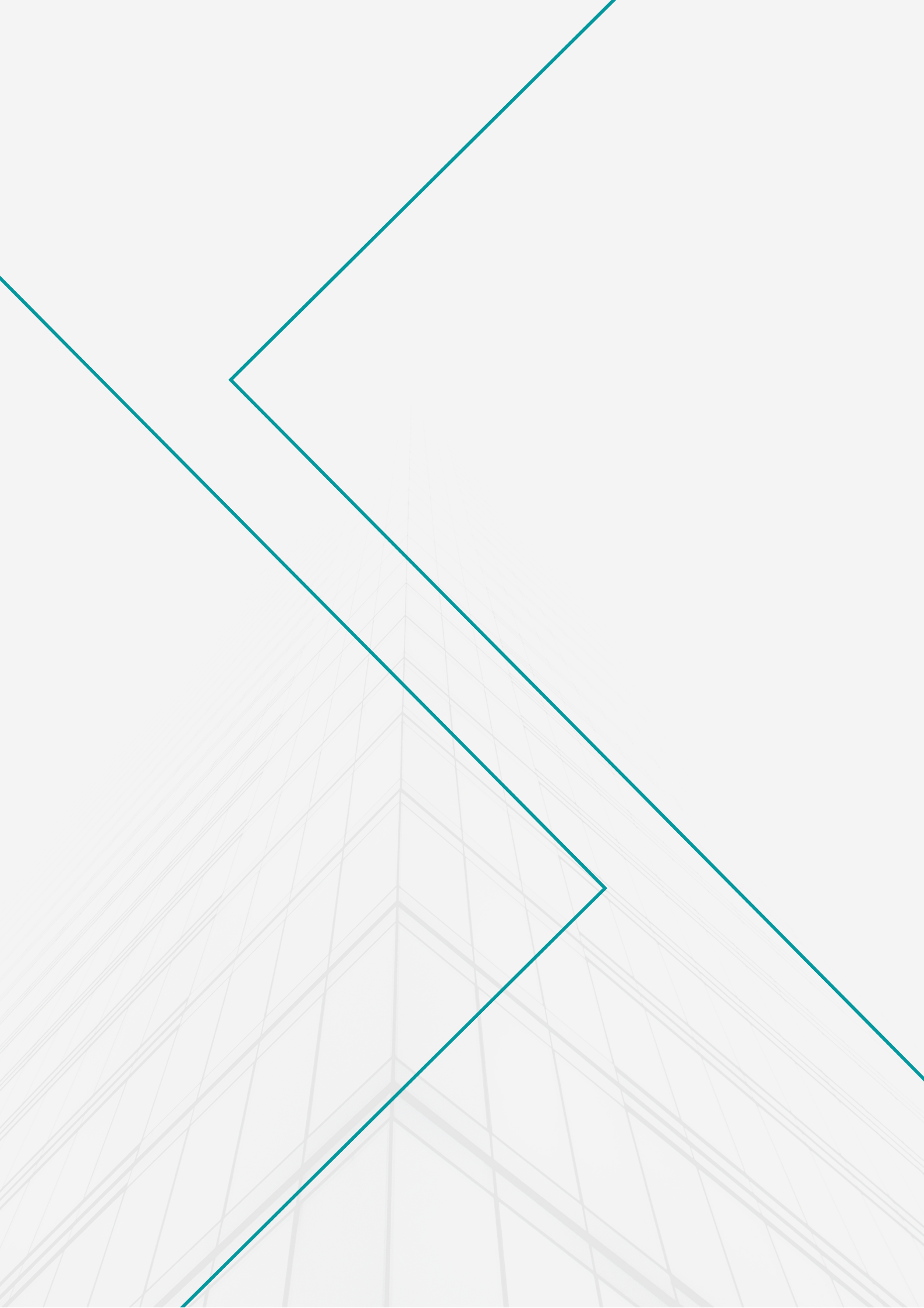
4.85 : 1



MAINTENANCE OF CAMPUS INFRASTRUCTURE

Percentage of expenditure incurred on maintenance of infrastructure (physical and academic support facilities) excluding salary component during the last five years (INR in Lakhs)

| Sl. No. | Year | Expenditure (in Lakhs) |
|--------------|---------|------------------------|
| 1 | 2017-18 | 73.67 |
| 2 | 2018-19 | 135.49 |
| 3 | 2019-20 | 220.37 |
| 4 | 2020-21 | 193.91 |
| 5 | 2021-22 | 256.25 |
| Total | | 879.69 |





NILGIRI COLLEGE OF ARTS AND SCIENCE

Affiliated to Bharathiar University | UGC 2(f) 12(B) Status
Run by CDFT | Established in 2012 | Self Financing Institution